

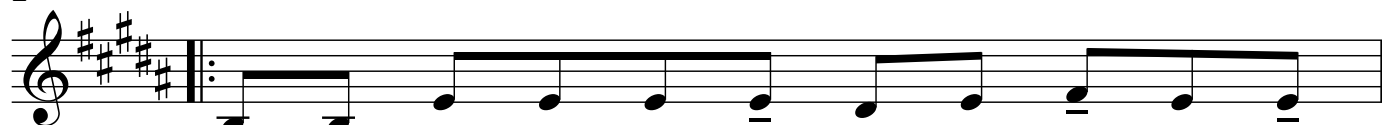
# Awot (weimahot) sjabbat ochtend

en Gewoerot

notated Eli Shleifer



2 Ba-roech a-ta A-do-naj— E-lo - hei-noe wei-lo-hei a-wo tei - noe



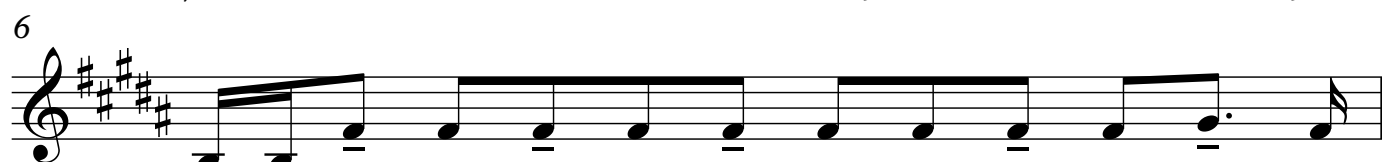
3 E - lo - hei Aw - ra - ham E - lo - hei Jitz - chak  
E - lo - hei Sa - ra, E - lo - hei Riw - ka Elo -



5 vei-lo - hei Ja - a-kow ha-eil ha-Ga-dol ha - Gi-bor we-ha-no-ra, Eil el  
hei Ra-chel welohei Lei-a



6 jon Go-meil cha - sa - dim to-wim, we - ko - nei ha - kol,



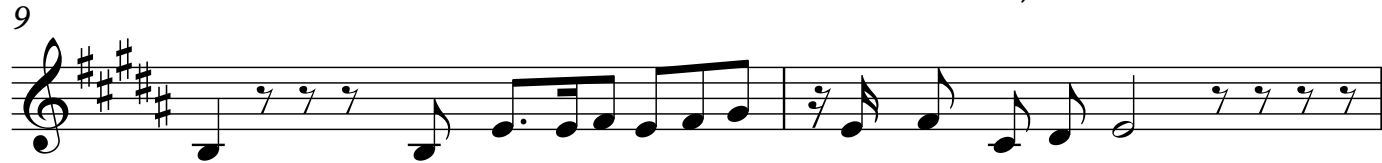
7 we - zo-cheir chas - dei a - wot, oe - mei - wi Go - eil liw -



8 nei we - nei - hem\_ le - ma - an sje - mo be - a - ha -



9 wa\_ me - lech o - zeir oe - mo - sji - a oe - ma -



- Gein. Ba-roech a-ta A-do naj, ma-Gein Aw-ra-ham

11



a - ta Gi - bor le - o - lam A - do - naj, me - cha - jei mei - tim

13



(Tussen Simchat Tora en Pesach)

a - ta, raw le - ho sji - a (ma - sjiw ha - roe - ach oe - mo - rid ha - Ga - sjem.)

15



me - chal - keil cha - jim be - che - sed, me - cha - jei mei - tim be - ra - cha - mim ra - bim,

17



so - meich nof - lim, we - ro - fei cho - lim, oe - ma -

18



20



tir a - soe - rim, oem - ka - jeim e - moe - na - to li - sjei - nei a - far, mi cha - mo - cha

ba - al Ge - woe - rot oe - mi do - me lach,

21



me - lech mei - mit oem - cha - jei oe - mats - mi -

22



ach je - sjoe - a. We - ne - e - man a - ta le - ha - cha - jot mei - tim. Ba - roech a

24



ta A - do - naj, me - cha - jei ha - mei - tim.