

# Ki Anoe Amecha

**Sjats**

4 E-lo - hee-noe v' E-lo-hee A-vo - tee-noe, s' - lach la -

10 noe m' - chal la - noe, ka - per la - noe. Ki

14 a - noe a - me - cha v' - a - ta E - lo - hee - noe,

**Gemeente**

18 A - noe va - ne - cha v' - a - ta A - vi - noe.

**Sjats**

22 A - noe a - va - de - cha v' - a - ta A - do - nee - noe,

**Gemeente**

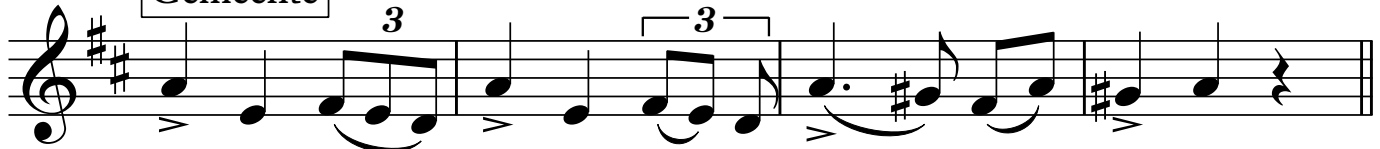
26 A - noe k' ha - le - cha v' - a - ta chel - kee - noe.

**Sjats**

A - noe na - cha - la - te - cha v' - a - ta gor - a - lee - noe,

2 30

Gemeente



A - noe tso - ne - cha v' - a - ta\_\_\_\_ ro - ee - noe.

34

Sjats



A - noe char - me - cha v' - a - ta\_\_\_\_ not - ree - noe,

38

Gemeente



A - noe f'oe - la - te - cha v' - a - ta\_\_\_\_ jots - ree - noe.

42

Sjats



A - noe ra - ja - te - cha v' - a - ta\_\_\_\_ do - dee - noe,

46

Gemeente



A - noe s'goe - la - te - cha v' - a - ta\_\_\_\_ k' - ro - vee - noe.

50

Sjats



A - noe a - me - cha v' - a - ta\_\_\_\_ Mal - kee - noe,

54

Gemeente

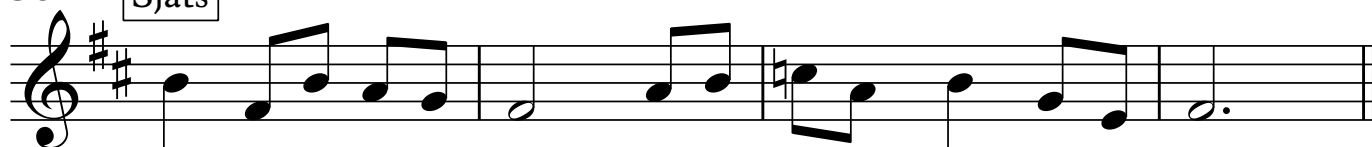


A - noe ma - a - mi - re - cha v' - a - ta ma - a - mi - ree - noe.

58

Sjats

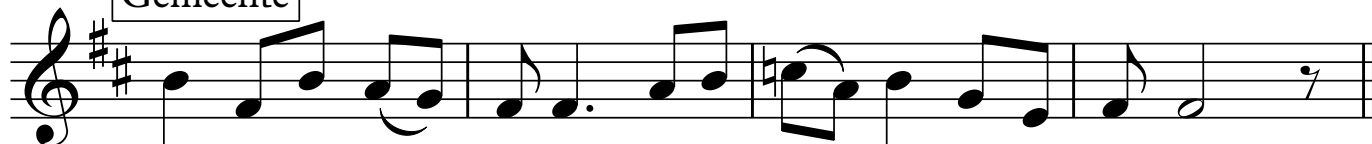
3



A - noe a-zee fa - nim v' - a - ta ra-choem v' cha noen.

62

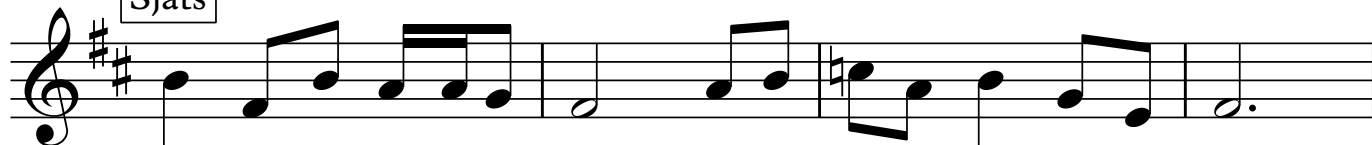
Gemeente



A-noe k' sjee o-ref v'-a - ta e-rech a -pa-jim.

66

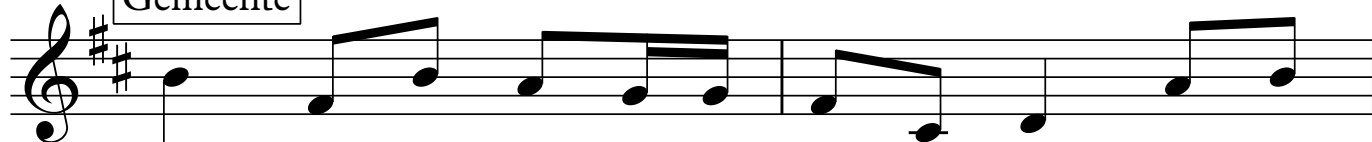
Sjats



A - noe m' lee-ee a - von v' - a - ta ma-lee ra-cha mim.

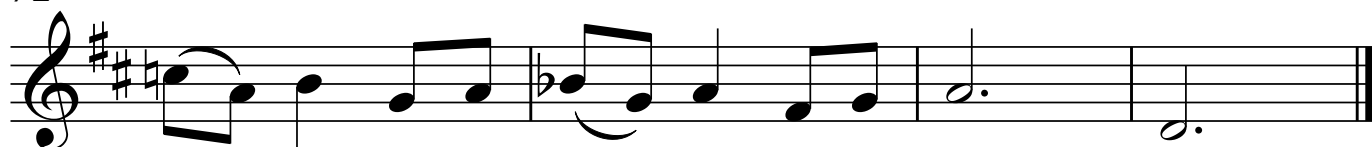
70

Gemeente



A - noe ja - mee - noe k' - tseel o - veer v' - a -

72



ta hoe oesj-no - te - cha lo ji - ta - moe.